

PENINSULA RESILIENCE PLANNING

VIRTUAL COMMUNITY WORKSHOP #2

April 3, 2024





INTERPRETACIÓN SIMULTÁNEA DURANTE EL TALLER COMUNITARIO PENINSULA RESILIENCE PLANNING



WELCOME AND INTRODUCTIONS

PENINSULA RESILIENCE PLANNING



Peninsula Resilience Planning

Agenda

1. Welcome and introductions (5 min)
2. Icebreaker Zoom poll (5 min)
3. PREP project overview (20 min)
4. Q & A (10 min)
5. Small group discussions in breakout rooms (35 min)
6. Wrap-up and Next Steps (15 min)

Introductions



Project Team

- Tammy Seale, PlaceWorks
- Eli Krispi, PlaceWorks
- Lauren Willey, PlaceWorks
- *Cathy Capriola, Community Planning Collaborative*
- *Additional PlaceWorks staff*
- *Atlas Planning Solutions*
- *Climate Resilient Communities (CRC)*
- *Nexus Planning*

Public Agency Staff

- County of San Mateo
- City of Belmont
- City of Burlingame
- City of East Palo Alto
- City of Half Moon Bay
- City of San Bruno

Participation Tips



Ask questions in the chat.

- The goal of this workshop is to introduce these topics. We want to make sure they are clear and approachable. Please type your questions in the chat and the team will answer them after the presentation.

All feedback is welcome.

- There is no “bad” feedback. We want to hear from all community members.

Everyone is welcome.

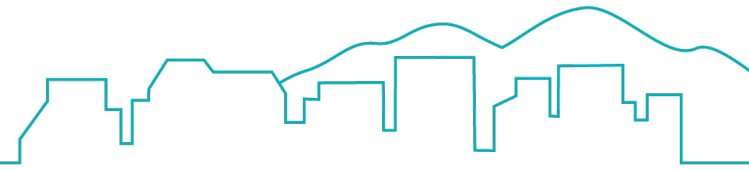
- Please be courteous and respectful of all participants.

Goals



- Understand how natural hazards, including those driven by climate change, have affected community members.
 - How have you planned for, responded to, and recovered from these hazards?
 - What are your experiences?
- Help community members understand the PREP project, including how it benefits each community and supports local priorities.

Hazards to plan for



Dam failure



Drought



Dune and bluff erosion



Extreme heat



Flooding



Hazardous materials



Landslides



Pests and diseases



Sea level rise



Seismic hazards



Storm surge



Wildfire



ICEBREAKER POLL

PENINSULA RESILIENCE PLANNING

Introductory Poll



Zoom Poll Questions:

1. Where do you live?
2. Where do you work or attend school?
3. What climate hazard in your community is of most concern to you?
4. Are you familiar with your community's General Plan?



PROJECT OVERVIEW

PENINSULA RESILIENCE PLANNING

What is resilience?

The ability to:

- Withstand disasters
- Recover from disasters
- Learn from past events to strengthen future response and recovery.



What is PREP?

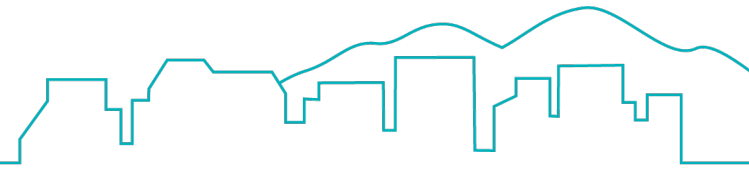
Peninsula Resilience Planning (PREP) is a project to plan for the harm posed by climate change and natural hazards for each participating community.

Includes:

- Vulnerability Assessments
- Safety Element updates
- Community Engagement



What is PREP?



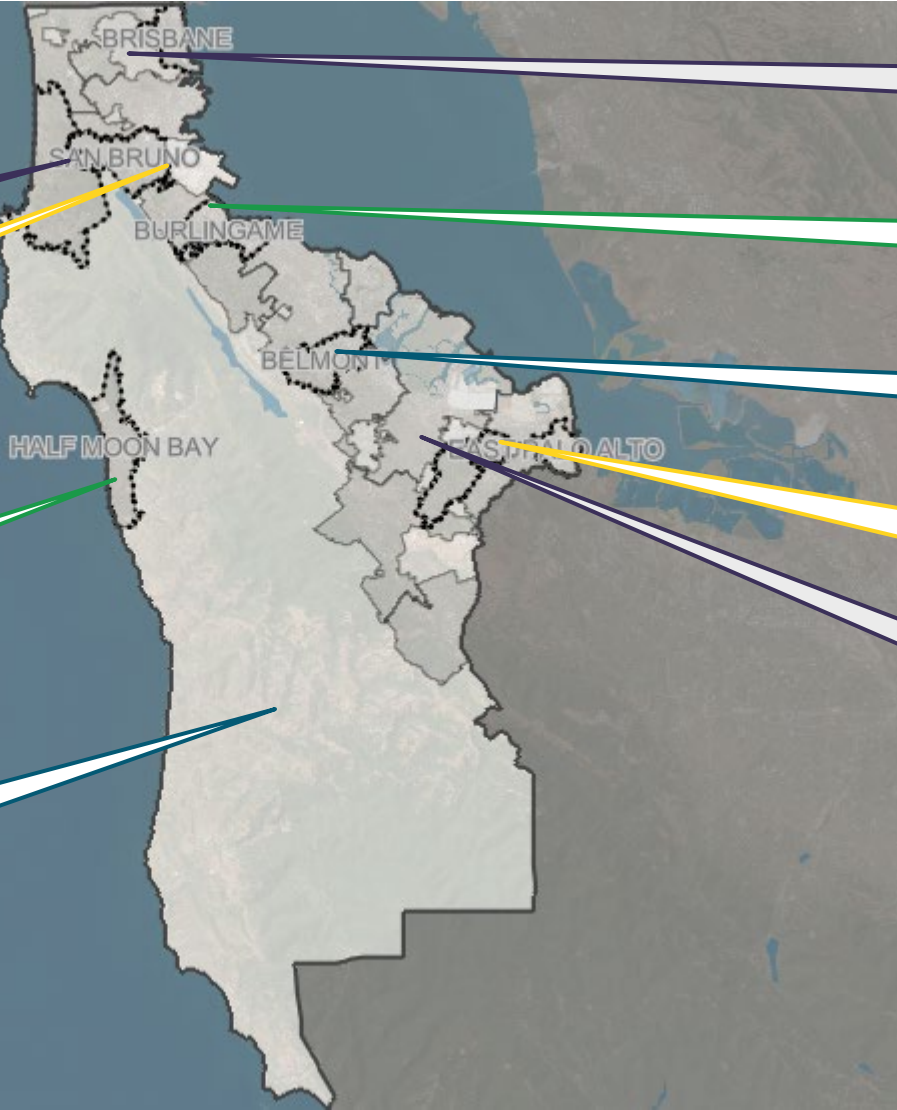
Collaborative project of nine local governments

Pacifica

San Bruno*

Half Moon Bay*

San Mateo County*
(unincorporated)



Brisbane

Burlingame*

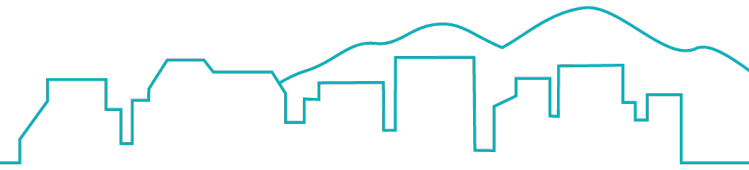
Belmont*

East Palo Alto*

Atherton*

*Conducting Safety Element Update and Engagement

The PREP process



How is the community affected by hazards?
Who and what is at risk?

- Vulnerability Assessment
- Hazard and evacuation mapping
- Background reports and studies

What can we do to protect against these hazards and reduce the harm?

- Regional best practices
- Gap analysis
- Goals, policies, and objectives

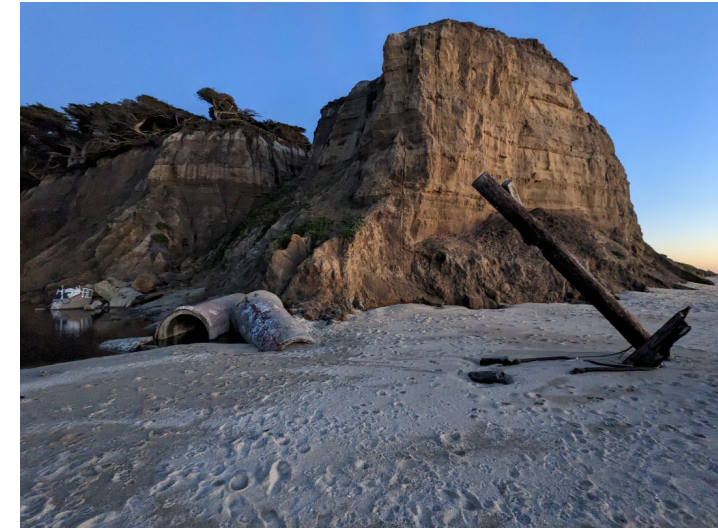
How can we make these efforts happen?

- Implementation measures and recommendations
- Safety Element Updates

Community Engagement

What is a Safety Element?

- Required part of a community's General Plan.
 - The General Plan guides how a community will grow and develop.
 - Local officials refer to it when making decisions about land use and other important matters.
- Identifies hazards of concern and related issues.
- Contains policies and actions to protect communities against natural disasters and hazards, such as wildfires.




Example language



Goal

- Prepare for, reduce vulnerability to, and adapt to changing climate conditions.
- 

Policy

- Promote vegetation management and fire-resistant landscape design on residential properties and businesses within the wildland-urban interface and very high fire hazard severity zone.
- 

Implementation Action

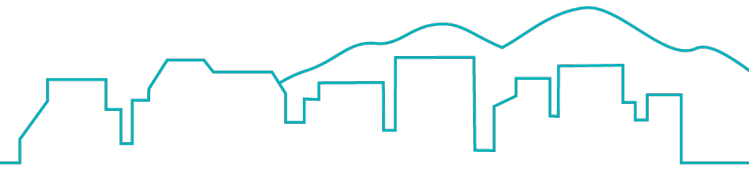
- Establish a Neighborhood Chipper Program in partnership with FIRE SAFE San Mateo.

Why Update the Safety Element?

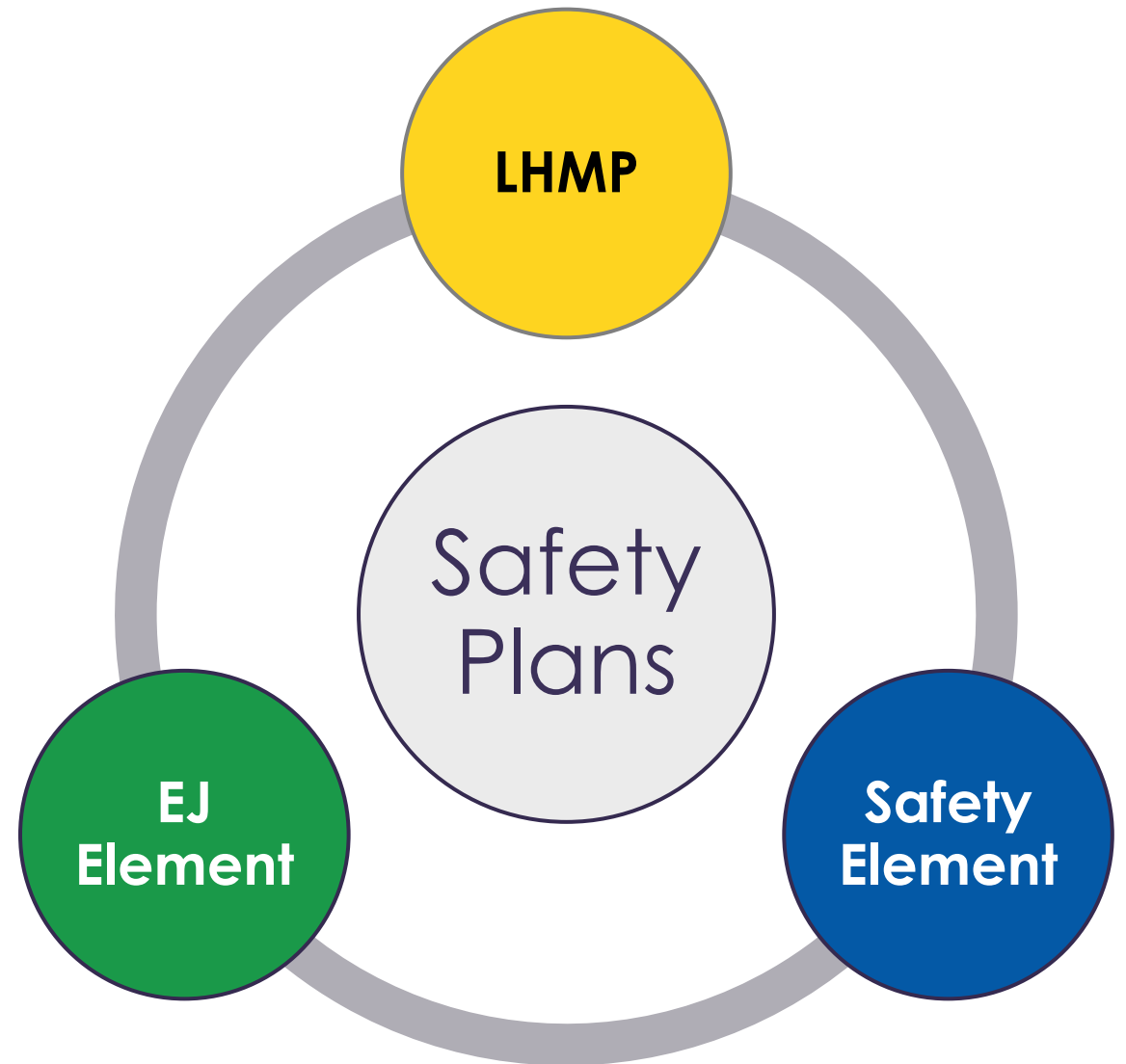
- State law requires a review and update of the Safety Element every eight years.
 - New requirement to address climate change vulnerability and climate adaptation and resiliency.
- Pull in successes and goals from other similar plans and newly updated General Plan elements.
- Ensure that the goals, policies, and actions reflect expertise, experience, and needs of the community.



Safety Element and other plans

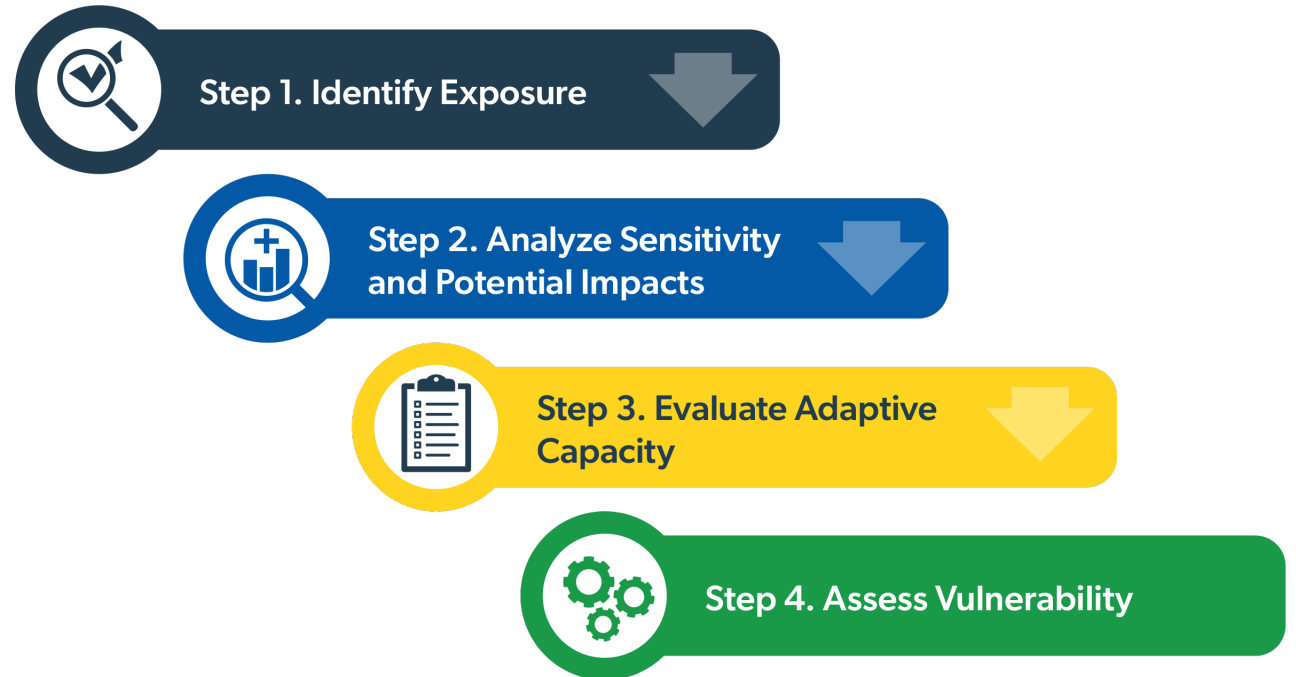


- Local Hazard Mitigation Plan (LHMP)
 - Provides current detailed information about hazards that we can refer to for background.
- Environmental Justice (EJ) element
 - Addresses pollution burden and other inequities on frontline communities.
 - Three communities are preparing this.
- “Multi-jurisdictional approach”
 - Several cities, towns, or unincorporated areas of the county work together to address a common issue in the region.

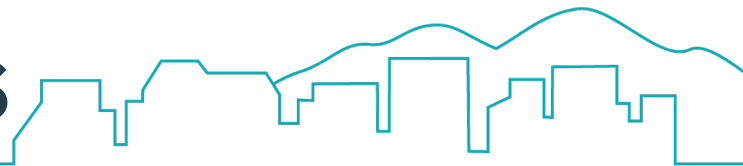


What is a Vulnerability Assessment?

- Assesses how people and community assets may be affected by climate change.
- Evaluates whether policies or programs exist that will help people to avoid impacts and/or recover quickly.
- Informs strategy development to reduce exposure to harm and increase resilience.



Vulnerability Assessment hazards



Dam failure



Drought



Dune and bluff erosion



Extreme heat



Flooding



Hazardous materials



Landslides



Pests and diseases



Sea level rise



Seismic hazards



Storm surge



Wildfire

Who and what is at risk?



People (especially frontline populations)



Buildings



Infrastructure networks



Economic systems



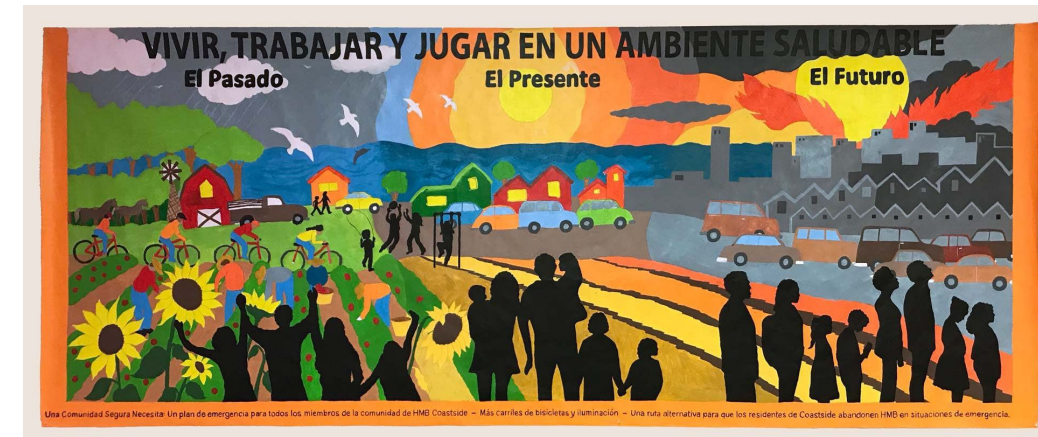
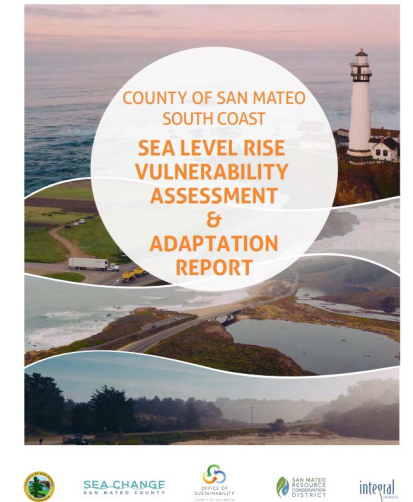
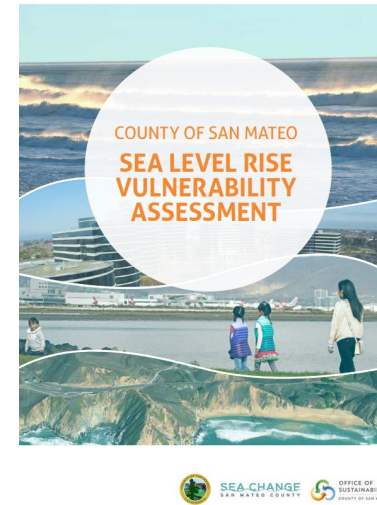
Key community services



Ecosystems and natural resources

Existing Studies

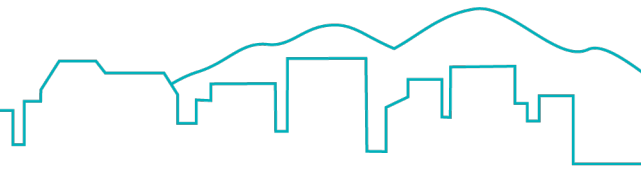
- The County and community stakeholders have prepared vulnerability assessments for sea level rise. PREP will include these and build on their findings.
 - South Coast Sea Level Rise Risk and Solutions Study
 - San Mateo County Sea Level Rise Vulnerability Assessment
 - Climate Ready SMC Pilot Project: Half Moon Bay Climate Action and Adaptation Outreach Pilot
 - East Palo Alto Community Vulnerability Adaptation Sea Level Rise Planning Project
 - Sea Change Burlingame





WEBSITE AND MAP VIEWER DEMONSTRATION PENINSULA RESILIENCE PLANNING

Environmental Justice Element Update



State Law requires the Environmental Justice element to consider the following issues within a disadvantaged community:



Pollution
Exposure and
Air Quality



Food Access



Safe and
Sanitary
Homes



Physical
Activity



Public
Facilities



Other health
risks, such as
climate
vulnerability

Three PREP communities are currently updating their Environmental Justice elements concurrent with the Safety Element Update:

- Burlingame
- East Palo Alto
- San Mateo County



QUESTIONS?

PENINSULA RESILIENCE PLANNING

Q&A Session

Access the chat window
Chat with meeting Chat Hosts to ask questions

Choose "Project questions? Ask me!" or "Zoom questions? Ask me!" in drop-down menu

Type Message Here

The screenshot shows a Zoom meeting interface. The main window is dark with a white chat window on the right. The chat window has a search bar, a list of participants, and a message input area. The bottom toolbar contains icons for Unmute, Stop Video, Invite, Participants, Share Screen, Chat, Record, Reactions, and Leave Meeting. Red arrows point from the text annotations to the Chat icon in the toolbar and the message input area in the chat window.

Participants (22)		
Find a participant		
Janet Chang (Me)	↓	✖
Tammy Seale (Host)	↓	✖
GR Grant R	↓	✖
SC Sloan Campi	↓	✖
MT Mark Teague (Co-host)	↓	✖

Zoom Group Chat

To: Everyone ▾

Type message here...



SMALL GROUP DISCUSSIONS

PENINSULA RESILIENCE PLANNING

Small Group Discussion



We will break into small groups to share feedback on community members' experience with natural hazards.

Facilitated discussion will last for 35 minutes followed by a brief report-out of each group's discussion themes by the group moderator.



REPORT BACK

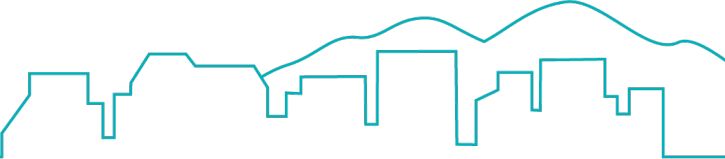
PENINSULA RESILIENCE PLANNING



NEXT STEPS

PENINSULA RESILIENCE PLANNING

Next Steps



How to stay involved



Upcoming engagement events

- In-person workshops (late April and May)
- Online survey available through April 30th.

Project website: prepsmc.com



 **PLACEWORKS**