

# PENINSULA RESILIENCE PLANNING

## VIRTUAL COMMUNITY WORKSHOP #1

March 13, 2024





# INTERPRETACIÓN SIMULTÁNEA DURANTE EL TALLER COMUNITARIO PENINSULA RESILIENCE PLANNING



# WELCOME AND INTRODUCTIONS

## PENINSULA RESILIENCE PLANNING



# Peninsula Resilience Planning

## Agenda

1. Welcome and introductions (5 min)
2. Icebreaker Zoom poll (5 min)
3. PREP project overview (20 min)
4. Q & A (10 min)
5. Small group discussions in breakout rooms (35 min)
6. Wrap-up and Next Steps (15 min)

# Introductions



## Project Team

- Cathy Capriola, Capriola Consulting
- Eli Krispi, PlaceWorks
- Lauren Willey, PlaceWorks
- *Additional PlaceWorks staff*
- *Atlas Planning Solutions*
- *Climate Resilient Communities (CRC)*
- *Nexus Planning*

## Public Agency Staff

- County of San Mateo
- City of Belmont
- City of Burlingame
- City of East Palo Alto
- City of Half Moon Bay
- City of San Bruno

# Participation Tips



## **Ask questions in the chat.**

- The goal of this workshop is to introduce these topics. We want to make sure they are clear and approachable. Please type your questions in the chat and the team will answer them after the presentation.

## **All feedback is welcome.**

- There is no “bad” feedback. We want to hear from all community members.

## **Everyone is welcome.**

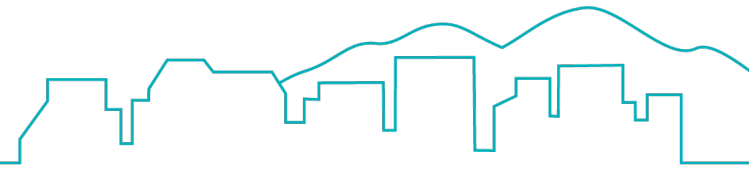
- Please be courteous and respectful of all participants.

# Goals



- Understand how natural hazards, including those driven by climate change, have affected community members.
  - How have you planned for, responded to, and recovered from these hazards?
  - What are your experiences?
- Help community members understand the PREP project, including how it benefits each community and supports local priorities.

# Hazards to plan for



Dam failure



Drought



Dune and bluff erosion



Extreme heat



Flooding



Hazardous materials



Landslides



Pests and diseases



Sea level rise



Seismic hazards



Storm surge



Wildfire





# ICEBREAKER POLL

PENINSULA RESILIENCE PLANNING

# Introductory Poll



## Zoom Poll Questions:

1. Where do you live?
2. Where do you work or attend school?
3. What climate hazard in your community is of most concern to you?
4. Are you familiar with your community's General Plan?



# PROJECT OVERVIEW

## PENINSULA RESILIENCE PLANNING

# What is resilience?

The ability to:

- Withstand disasters
- Recover from disasters
- Learn from past events to strengthen future response and recovery.



# What is PREP?

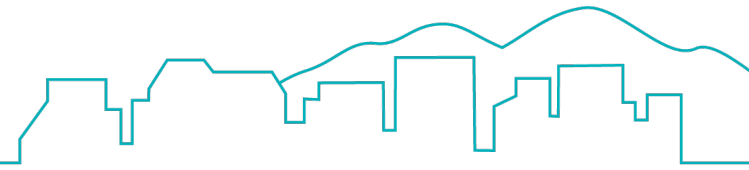
**Peninsula Resilience Planning (PREP) is a project to plan for the harm posed by climate change and natural hazards for each participating community.**

## **Includes:**

- Vulnerability Assessments
- Safety Element updates
- Community Engagement



# What is PREP?



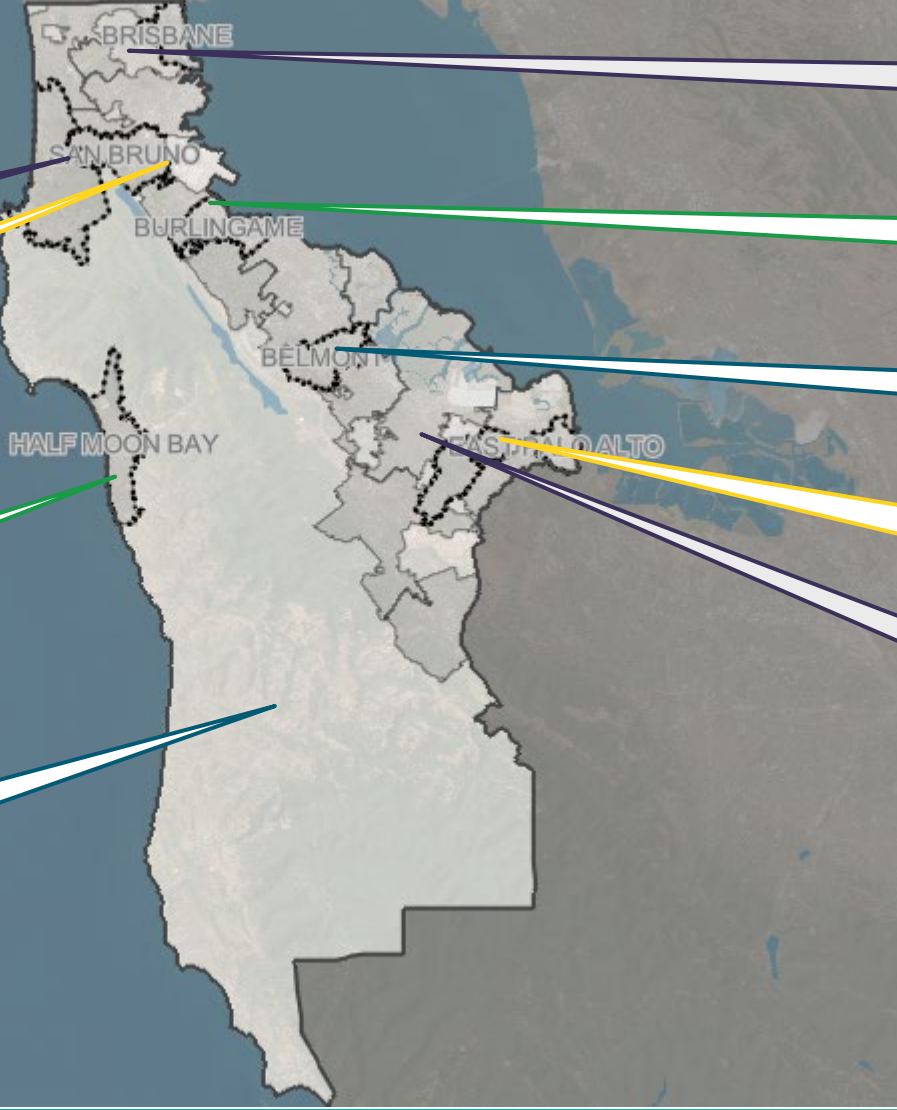
Collaborative project of nine local governments

Pacifica

San Bruno\*

Half Moon Bay\*

San Mateo County\*  
(unincorporated)



Brisbane

Burlingame\*

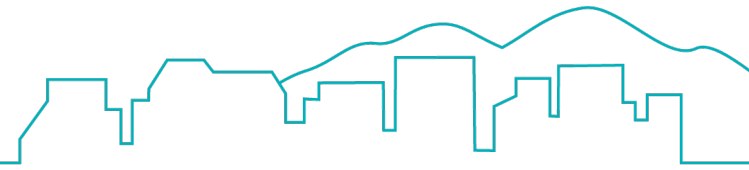
Belmont\*

East Palo Alto\*

Atherton\*

\*Conducting Safety Element Update and Engagement

# The PREP process



How is the community affected by hazards?  
Who and what is at risk?

- Vulnerability Assessment
- Hazard and evacuation mapping
- Background reports and studies

What can we do to protect against these hazards and reduce the harm?

- Regional best practices
- Gap analysis
- Goals, policies, and objectives

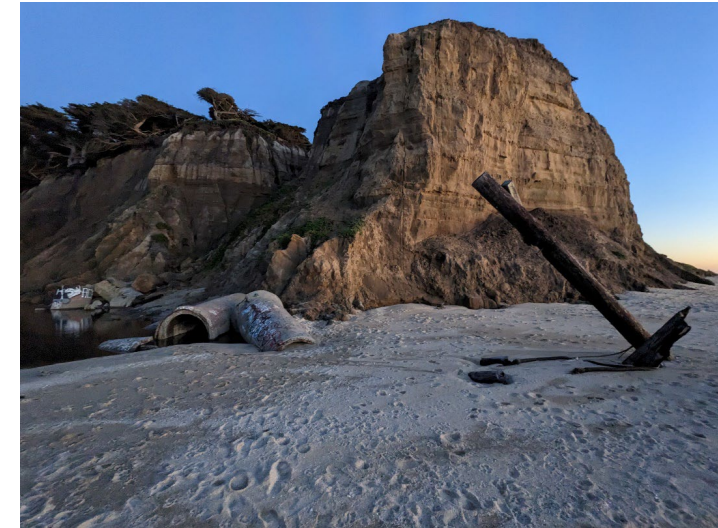
How can we make these efforts happen?

- Implementation measures and recommendations
- Safety Element Updates

**Community Engagement**

# What is a Safety Element?

- Required part of a community's General Plan.
  - The General Plan guides how a community will grow and develop.
  - Local officials refer to it when making decisions about land use and other important matters.
- Identifies hazards of concern and related issues.
- Contains policies and actions to protect communities against natural disasters and hazards, such as wildfires.





# Example language



## Goal

- Prepare for, reduce vulnerability to, and adapt to changing climate conditions.
- 

## Policy

- Promote vegetation management and fire-resistant landscape design on residential properties and businesses within the wildland-urban interface and very high fire hazard severity zone.
- 

## Implementation Action

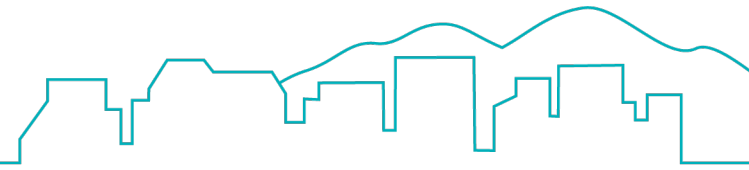
- Establish a Neighborhood Chipper Program in partnership with FIRE SAFE San Mateo.

# Why Update the Safety Element?

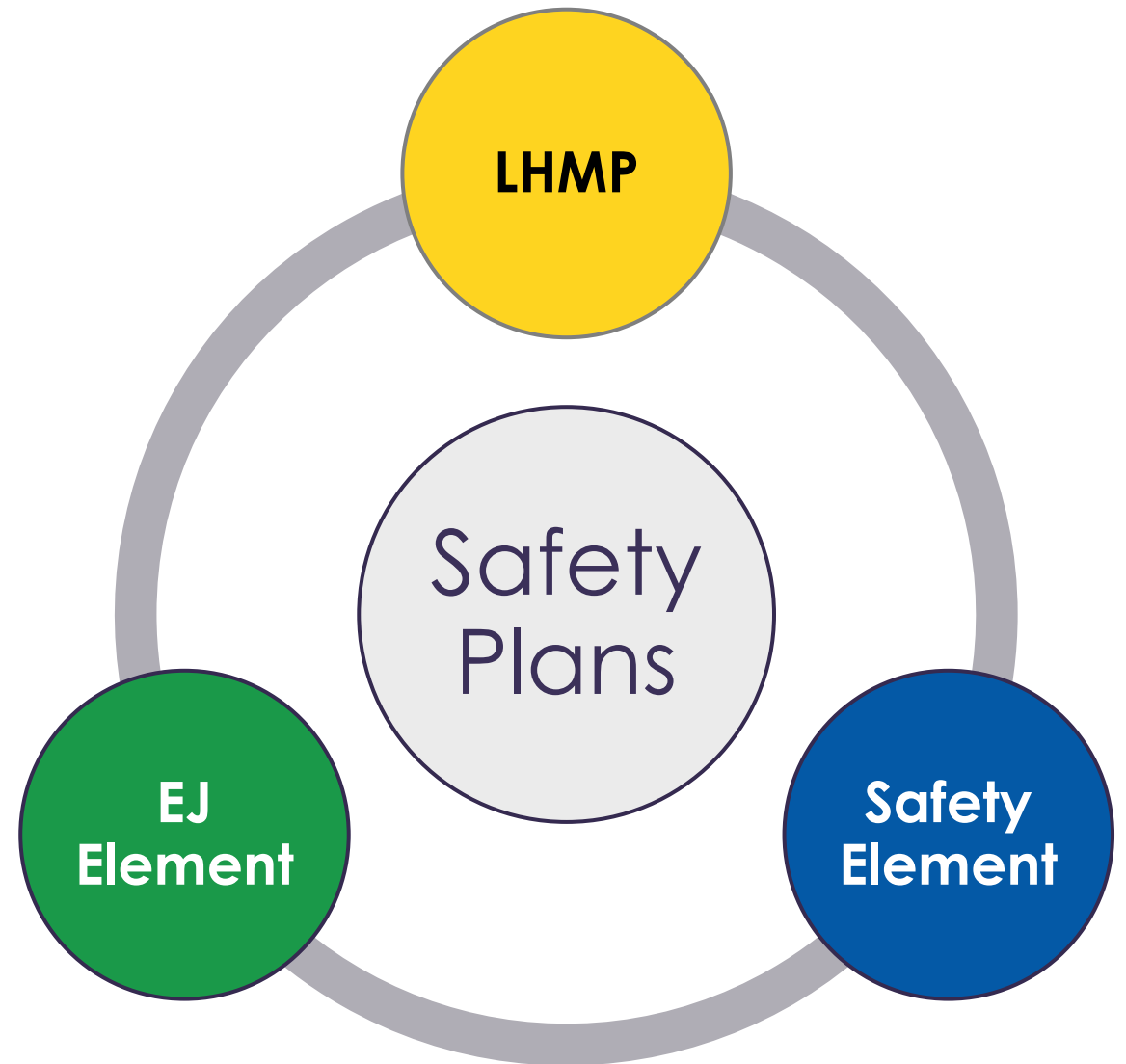
- State law requires a review and update of the Safety Element every eight years.
  - New requirement to address climate change vulnerability and climate adaptation and resiliency.
- Pull in successes and goals from other similar plans and newly updated General Plan elements.
- Ensure that the goals, policies, and actions reflect expertise, experience, and needs of the community.



# Safety Element and other plans

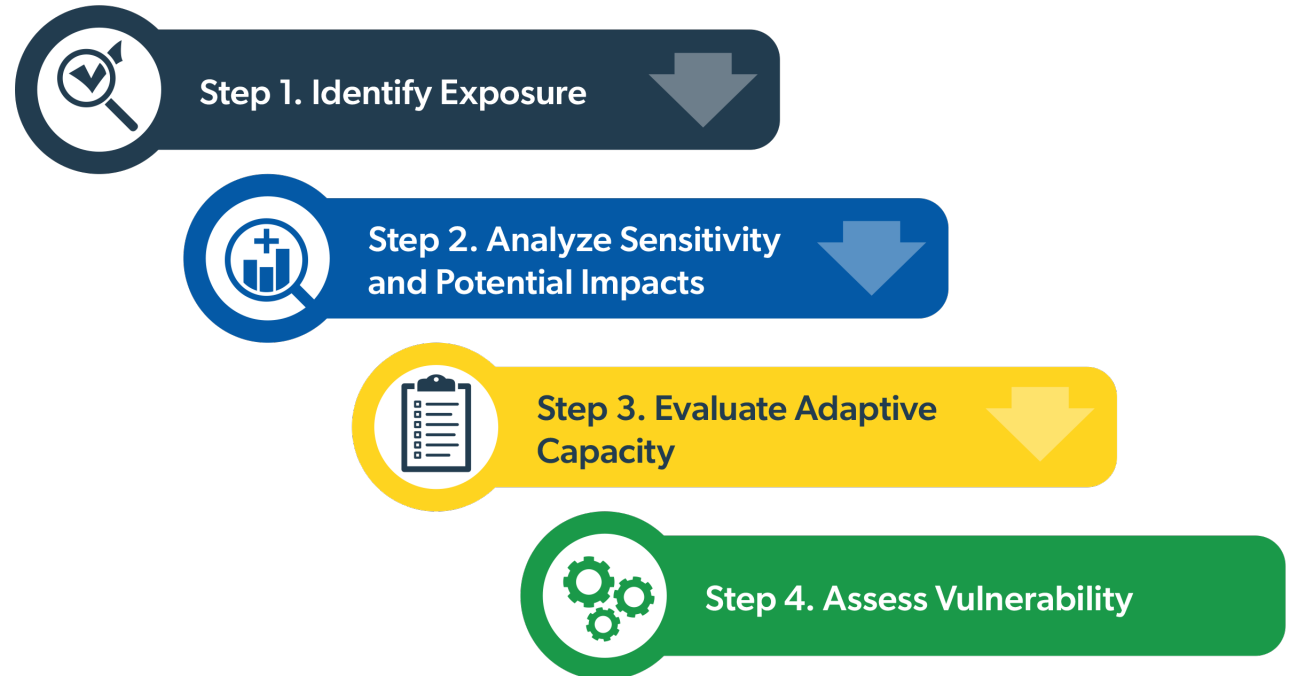


- Local Hazard Mitigation Plan (LHMP)
  - Provides current detailed information about hazards that we can refer to for background.
- Environmental Justice (EJ) element
  - Addresses pollution burden and other inequities on frontline communities.
  - Three communities are preparing this.
- “Multi-jurisdictional approach”
  - Several cities, towns, or unincorporated areas of the county work together to address a common issue in the region.

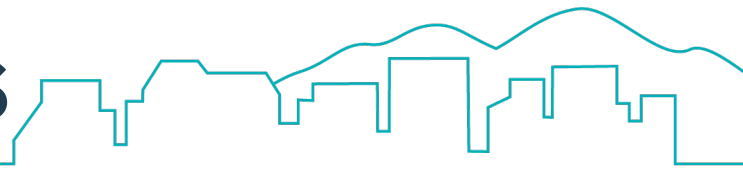


# What is a Vulnerability Assessment?

- Assesses how people and community assets may be affected by climate change.
- Evaluates whether policies or programs exist that will help people to avoid impacts and/or recover quickly.
- Informs strategy development to reduce exposure to harm and increase resilience.



# Vulnerability Assessment hazards



Dam failure



Drought



Dune and bluff erosion



Extreme heat



Flooding



Hazardous materials



Landslides



Pests and diseases



Sea level rise



Seismic hazards



Storm surge



Wildfire

# Who and what is at risk?



People (especially frontline populations)



Buildings



Infrastructure networks



Economic systems



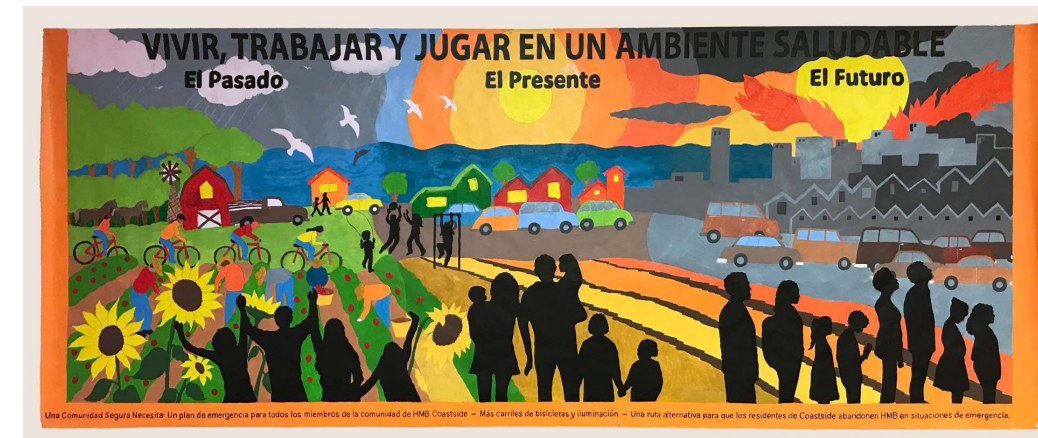
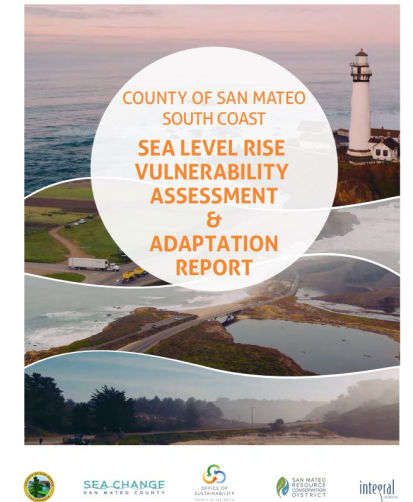
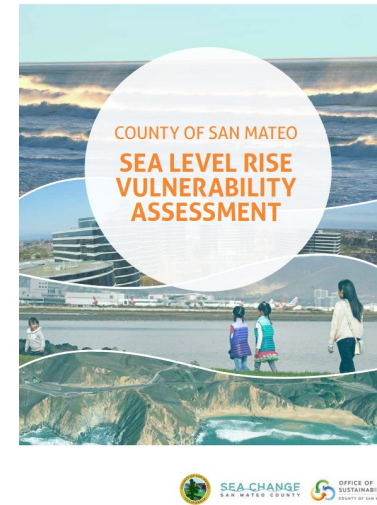
Key community services



Ecosystems and natural resources

# Existing Studies

- The County and community stakeholders have prepared vulnerability assessments for sea level rise. PREP will include these and build on their findings.
  - South Coast Sea Level Rise Risk and Solutions Study
  - San Mateo County Sea Level Rise Vulnerability Assessment
  - Climate Ready SMC Pilot Project: Half Moon Bay Climate Action and Adaptation Outreach Pilot
  - East Palo Alto Community Vulnerability Adaptation Sea Level Rise Planning Project
  - Sea Change Burlingame

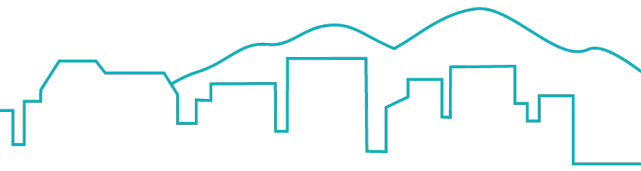




# WEBSITE AND MAP VIEWER DEMONSTRATION PENINSULA RESILIENCE PLANNING



# Environmental Justice Element Update



State Law requires the Environmental Justice element to consider the following issues within a disadvantaged community:



Pollution  
Exposure and  
Air Quality



Food Access



Safe and  
Sanitary  
Homes



Physical  
Activity



Public  
Facilities



Other health  
risks, such as  
climate  
vulnerability

**Three PREP communities are currently updating their Environmental Justice elements concurrent with the Safety Element Update:**

- Burlingame
- East Palo Alto
- San Mateo County



# QUESTIONS?

## PENINSULA RESILIENCE PLANNING

# Q&A Session

**Access the chat window**  
Chat with meeting Chat Hosts to ask questions

Choose "Project questions? Ask me!" or "Zoom questions? Ask me!" in drop-down menu

**Type Message Here**

The screenshot shows a Zoom meeting window with a dark background. At the bottom, there is a toolbar with icons for Unmute, Stop Video, Invite, Participants (22), Share Screen, Chat, Record, and Reactions. A red arrow points from the text "Access the chat window" to the Chat icon. Another red arrow points from the text "Choose 'Project questions? Ask me!' or 'Zoom questions? Ask me!' in drop-down menu" to the Chat icon. To the right, a "Participants (22)" window is open, showing a list of participants: Janet Chang (Me), Tammy Seale (Host), Grant R, Sloan Campi, and Mark Teague (Co-host). Below the list is a "Zoom Group Chat" window with a search bar "Find a participant" and a message input field "Type message here...". A red arrow points from the text "Type Message Here" to the message input field. The meeting ID is visible in the top left corner.



# SMALL GROUP DISCUSSIONS

## PENINSULA RESILIENCE PLANNING

# Small Group Discussion



**We will break into small groups to share feedback on community members' experience with natural hazards.**

**Facilitated discussion will last for 35 minutes followed by a brief report-out of each group's discussion themes by the group moderator.**



# REPORT BACK

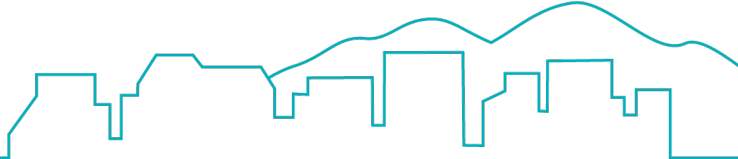
PENINSULA RESILIENCE PLANNING



# NEXT STEPS

PENINSULA RESILIENCE PLANNING

# Next Steps





# How to stay involved



## Upcoming engagement events

- Virtual Community Workshop #2: April 3rd at 6:00 pm
- Online survey available through April 30<sup>th</sup>.

**Project website: [prepsmc.com](https://prepsmc.com)**



 **PLACEWORKS**